



5-YEAR MASTER PLAN • 2026 - 2030

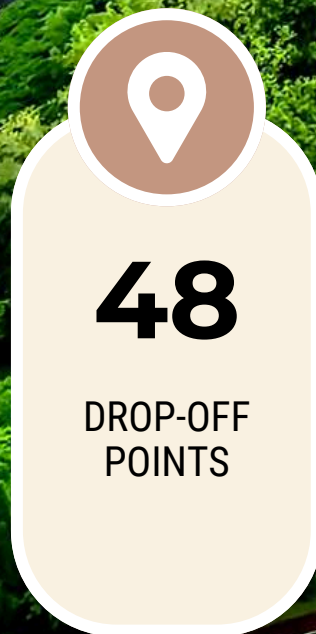
BUKIT BATOK

OUR TOWN, OUR STORY:

Reflections on our journey and shaping future goals

OUR AMENITIES AND SHARED SPACES

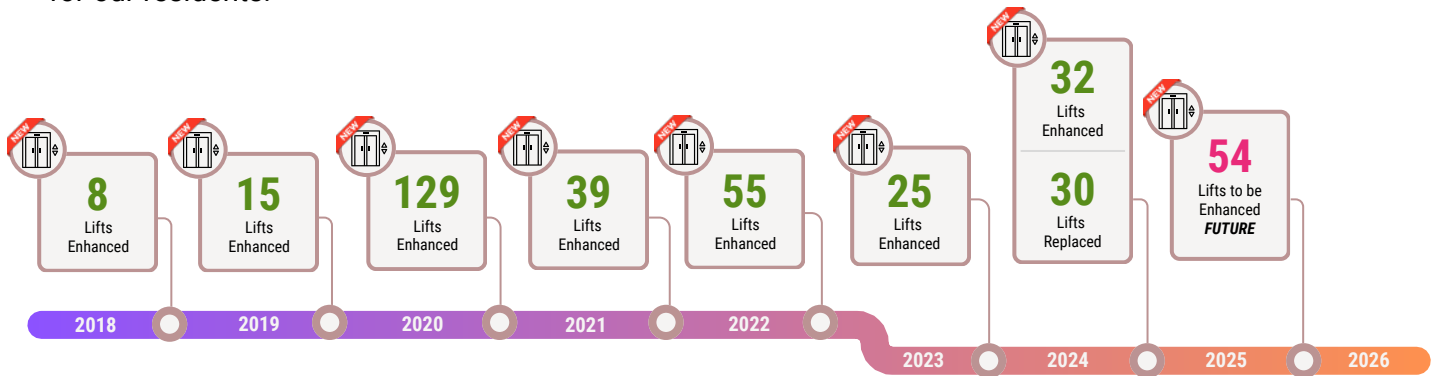
Check out the amenities Bukit Batok has to offer!



LIFT PERFORMANCES & SUSTAINABILITY

OPTIMISING LIFT PERFORMANCES FOR SMOOTHER RIDES

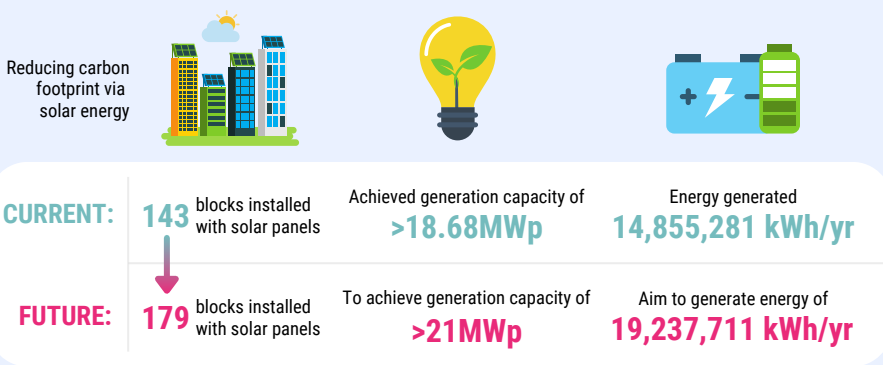
387 lifts in Bukit Batok either have been or will be upgraded and enhanced under the Lift Replacement Program (LRP) and Lift Enhancement Program (LEP) to ensure a safer and smoother lift ride experience for our residents.



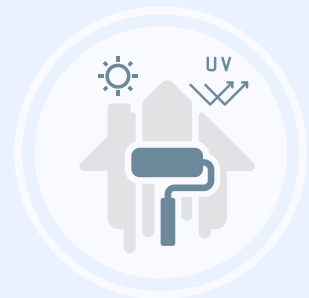
EMBRACING SUSTAINABILITY SOLUTIONS IN JRTC

Jurong-Clementi Town Council partnered with agencies, residents, volunteers and communities to roll out initiatives and create awareness on sustainability in our estate. These collaborations have helped create a sustainable environment benefitting the whole of our town.

INSTALLATION OF SOLAR PANELS



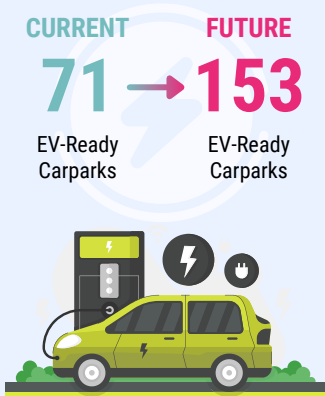
HEAT-REFLECTIVE PAINT INITIATIVE BY 2030



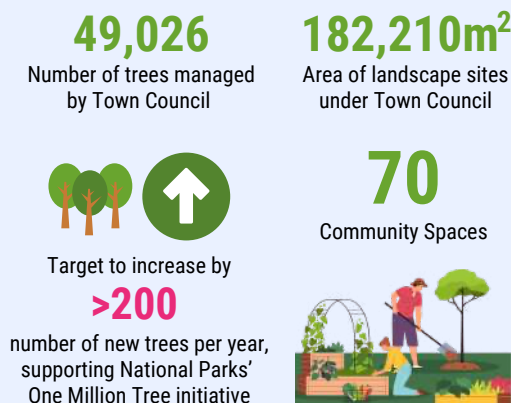
RECYCLING EFFORTS from 2024 - 2025



EV-READY CARPARKS



SUSTAINABLE CITIES & COMMUNITIES



COMPLETED PROJECTS (2021 - 2025)

In the past five years, Bukit Batok neighbourhoods have been rejuvenated with more **social and shared spaces, drop-off points, fitness corners, playgrounds, and community gardens**. **Nine blocks** have been revitalised through the Neighbourhood Renewal Programme and **77 blocks** through the Repairs and Redecoration works. Currently, Repairs and Redecoration works are in progress for **75 blocks**.

CONNECTING OUR NEIGHBOURHOOD

Rain or Shine: Sheltered Paths, Smoother Journeys



NEW COVERED LINKWAY BETWEEN BLOCK 642 BUKIT BATOK CENTRAL TO OVERHEAD BRIDGE



NEW HIGH LINKWAY BETWEEN BLOCK 131 AND 119 BUKIT BATOK WEST AVE 6



NEW DROP-OFF POINT AT BLOCK 227 BUKIT BATOK CENTRAL



NEW HIGH LINKWAY BETWEEN BLOCK 168 AND 189 BUKIT BATOK WEST AVE 8

"We don't need umbrellas during heavy rain when we commute between blocks, as they are now sheltered. My husband is wheelchair-bound, so I would previously have to check the weather app to see if it was raining. The new linkway is also useful and convenient for the elderly and students who uses it every day. I'm thankful to the MP for this estate improvement works"



PORNTHIP SETSOPHONPHONG

Resident of Bukit Batok on the New High Linkway between Block 168 and 169 Bukit Batok West Ave 8

HAVING MORE FUN IN OUR NEIGHBOURHOOD

Rejuvenated Social and Recreation Shared Spaces



UPGRADED ROOFING FOR GALLERY, FITNESS CORNER, TOILETS AND JOGGING TRACK AT BUKIT BATOK SPORTS HUB



UPGRADED BUKIT BATOK NEIGHBOURHOOD PARK (FUJI HILL)



UPGRADED COSY CORNER AT BLOCK 175 BUKIT BATOK WEST AVE 8



**UPGRADED PLAYGROUND NEAR
BLOCK 129 BUKIT BATOK WEST AVE 6**

"The modern design, improved materials and flooring have made the playground not only safer but also more fun for children. Even my nephew and neighbours love spending time there."

TAY SENG TONG JON
Resident of Bukit Batok
on the Upgraded Playground at
Block 129 Bukit Batok West Ave 6



**UPGRADED WALKING / JOGGING TRACK AT
BUKIT BATOK CENTRAL PARK (SPORTS HUB)**

"I'm glad the track has been widened. It used to be very narrow, but now it's spacious enough for joggers and cyclists."

KUBOTA JUNKO
Resident of Bukit Batok
on the Upgraded Walking / Jogging
Track at Bukit Batok Central Park
(Sports Hub)



LIST OF COMPLETED WORKS AND WORK-IN-PROGRESS (2021 - 2025)



COVERED LINKWAY / FOOTPATH

- High Linkway between Block 131 and 119
- High Linkway between Block 168 and 169
- Covered Linkway at Block 642 to Overhead Bridge
- Covered Linkway from Block 117 to Block 119
- Covered Linkway from Block 298 to Bus Stop
- Shelter Over Existing Footpath and Ramp at Block 106
- Covered Linkway at Block 103
- Covered Linkway from Block 207 to 208
- Covered Linkway from Block 623 to 624
- Covered Linkway connecting Block 296C to MSCP
- High Roof over Centre Aisle of Block 156 (Market)
- New Signage, Floor Tiles and Replacement of Existing Awning Roofing to Shop at Block 150 to 158
- Covered High Linkway from Block 185 to 187
- Covered Linkway at Block 183
- High Linkway From Block 178 to Badminton Court
- Covered Linkway From Block 179 to 175
- High Linkway From Block 178 to 180
- Covered Linkway From Block 182 to 184
- High Linkway From Block 186 to 187
- Covered Linkway from New Drop-off Point to Existing Linkway between Block 191 and 192



REPAIRS & REDECORATION

- Blocks 101 to 110, 133 to 139, 150 to 159, 188 to 193
- Blocks 111 to 132, 160 to 177, 194A and 194B
- Blocks 623 to 628, 630 to 634, 636 to 644
- Blocks 201 to 211, 215 to 221, 228 to 230, 230A
- Blocks 297 to 299



DROP-OFF POINT

- Drop-off Point at Block 227
- Drop-off Point at Block 101
- Drop-off Point at Block 164
- Drop-off Point at Block 176
- Drop-off Point at Block 179
- Drop-off Point at Block 193
- Drop-off Point at Block 182, 184
- Drop-off Point opposite Block 188A (MSCP)



FITNESS CORNER / FACILITIES

- Upgraded Roofing for Gallery, Fitness Corner, Toilets and Jogging Track at Bukit Batok Sports Hub
- Fitness Corner at Block 104
- Fitness Corner at Block 117
- Fitness Corner at Block 299
- Fitness Corner at Block 193



PARK / LANDSCAPE

- Upgraded Bukit Batok Neighbourhood Park (Fuji Hill)
- Landscape Works at Block 299
- Landscape Works between Block 189 to 192
- Garden near Block 185
- Community Garden at Rooftop of Block 194 and 296 (MSCP)
- Community Garden beside Block 622A (MSCP)



PLAYGROUND

- Playground at Block 129
- Playground at Block 115
- Playground at Block 175
- Playground at Block 298
- Playground at Block 193



MULTI-PURPOSE HALL / PAVILION / COURT / BBQ PIT

- Cosy Corner at Block 175
- Walking/Jogging Track at Bukit Batok Central Park (Sports Hub)
- Sheltered Badminton Court at Block 188
- Senior Citizen Corner at Block 187
- Study Corner and Resident Corner at Block 106
- Upgraded Pavilion with New BBQ Pits at Block 191
- New Pavilion near Block 179
- New Precinct Marker near Block 299
- New Precinct Marker next to Block 188A (MSCP)
- New Precinct Marker next to Block 189
- Multi-Purpose Hall at Block 105A
- Futsal Court at Block 226
- Seating Pavilion at Block 192
- Street Soccer Court near Block 296 (by LTA)
- Upgraded Existing Pavilion and New Precinct Marker at Block 151, 153, 158



UPGRADES

- Lift Replacement Programme at Blocks 188 to 193, 623 to 628, 298 and 299
- Upgraded Driveway at Bukit Batok Central from Interlocking Pavers to Tarmac Road Surface (by HDB)

FUTURE WORKS (2026 - 2030)



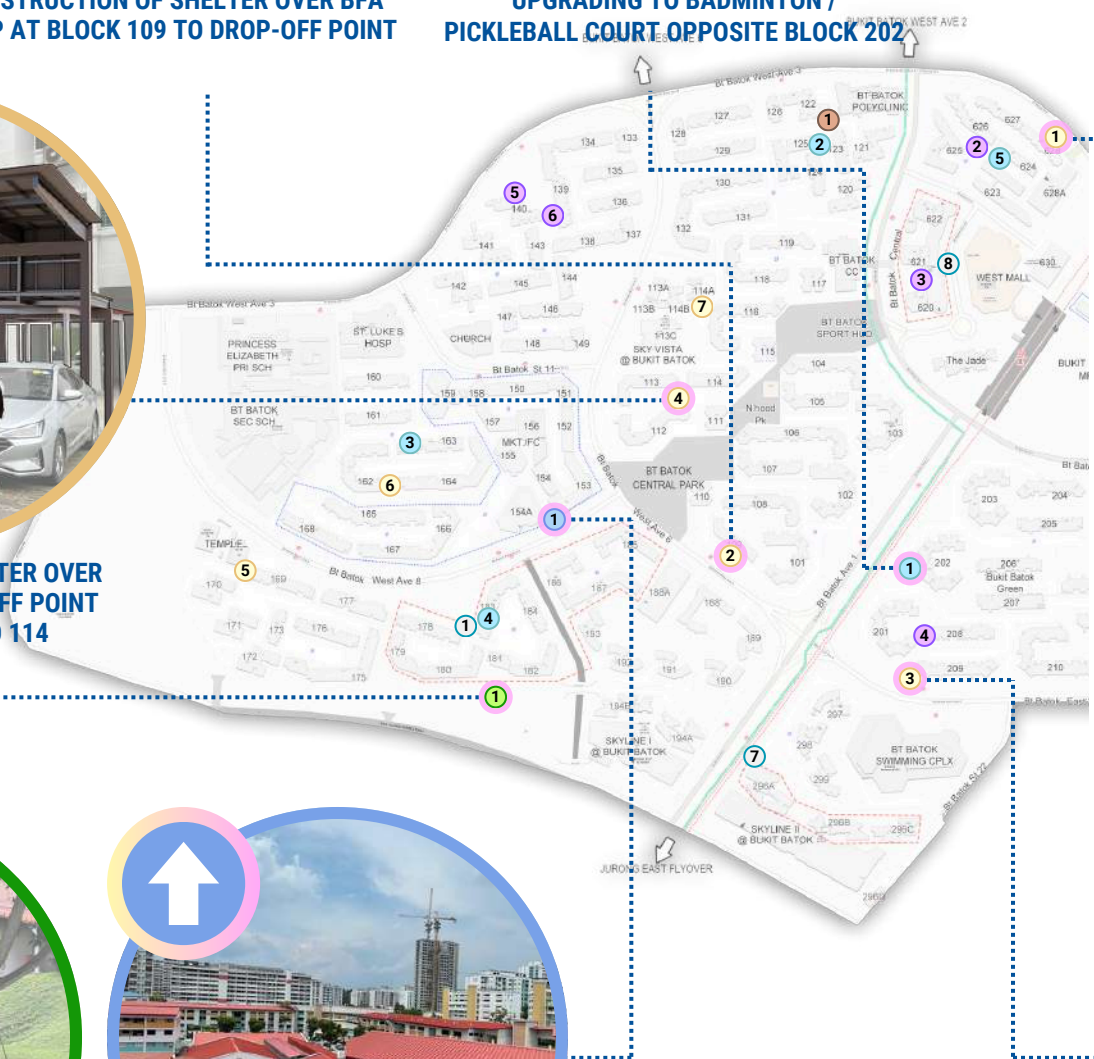
CONSTRUCTION OF SHELTER OVER BFA RAMP AT BLOCK 109 TO DROP-OFF POINT



UPGRADING TO BADMINTON / PICKLEBALL COURT OPPOSITE BLOCK 202



CONSTRUCTION OF SHELTER OVER BFA RAMP WITH DROP-OFF POINT FROM BLOCK 112 TO 114



REINSTATEMENT OF FACILITIES AT SENSORY PARK NEAR BLOCK 180 TO 182



NRP AT BLOCK 150 TO 159, 154A (MSCP), 165 TO 168



CONSTRUCTION OF SHELTER OVER BFA RAMP FROM BLOCK 628 TO BUS STOP

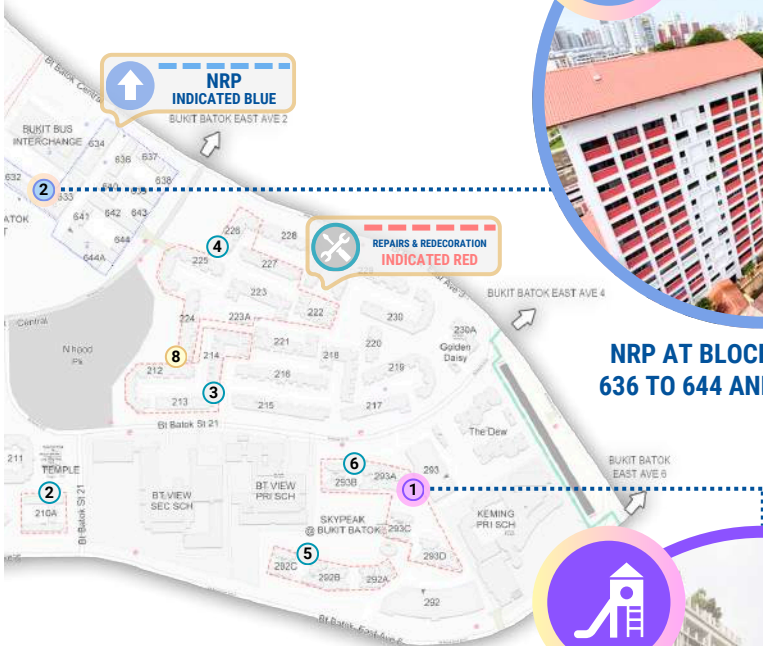
LIST OF FUTURE WORKS IN 2026 - 2030

↑ NEIGHBOURHOOD RENEWAL PROGRAMME

- ① Neighbourhood Renewal Programme at Blocks 150 to 159, 154A (MSCP) and 165 to 168
- ② Neighbourhood Renewal Programme at Blocks 632 to 634, 636 to 644 and 644A (MSCP)



NRP AT BLOCK 632 TO 634, 636 TO 644 AND 644A (MSCP)



🔧 REPAIRS & REDECORATION

- ① Blocks 178 to 187
- ② Block 210A
- ③ Blocks 212 to 214
- ④ Blocks 222 to 227
- ⑤ Blocks 292A to 292C
- ⑥ Blocks 293A to 293D
- ⑦ Blocks 296A to 296C
- ⑧ Blocks 620 to 622

🚶 COVERED LINKWAY / FOOTPATH

- ① Construction of Shelter over BFA Ramp from Block 628 to Bus Stop
- ② Construction of Shelter over BFA ramp at Block 109 to Drop-off Point
- ③ Construction of Shelter over BFA Ramp from Block 209 to Bus Stop
- ④ Construction of Covered Shelter with Drop-off Point from Block 112 to 114
- ⑤ Upgrading of Covered Linkway Shelter at Block 169 to 170
- ⑥ Upgrading of Covered Walkway and Wooden Platform between Block 162 to 164
- ⑦ Construction of Covered Linkway at Block 116 to 114B
- ⑧ Construction of Shelter over BFA Ramp from Block 212 Connecting to Linkway near 224

🏛️ MULTI-PURPOSE COURT / RESIDENTS' CORNER

- ① Upgrading to Badminton / Pickleball Court Opposite Block 202
- ② Construction of Residents' Corner at Block 125
- ③ Upgrading of Study Corner at Block 163
- ④ Upgrading of Residents' Corner at Block 183
- ⑤ Upgrading of Senior Citizens' Corner at Block 624

🌱 SENSORY PARK

- ① Reinstatement of Facilities at Sensory Park near Block 180 to 182

🏰 PLAYGROUND / FITNESS CORNER

- ① Upgrading of Playground at Block 293
- ② Upgrading of Multi-Generation Fitness Corner / Playground at Block 626
- ③ Upgrading of Multi-Generation Fitness Corner / Playground at Block 620 / 621
- ④ Upgrading of Multi-Generation Fitness Corner / Playground at Block 208
- ⑤ Upgrading of Playground at Block 140
- ⑥ Upgrading of Multi-Generation Fitness Corner at Block 139

📍 DROP-OFF POINT

- ① Construction of Drop-off Point for BFA Ramp at Block 122



CONSTRUCTION OF SHELTER OVER BFA RAMP FROM BLOCK 209 TO BUS STOP



UPGRADING OF PLAYGROUND AT BLOCK 293

HIGHLIGHTS OF FUTURE WORKS

(2026 - 2030)



CONSTRUCTION OF LOW SHELTER OVER BFA RAMP FROM BLOCK 628 BUKIT BATOK CENTRAL LEADING TO BUS STOP



NEIGHBOURHOOD RENEWAL PROGRAMME AT BLOCKS 150 TO 159, 154A (MSCP), 165 TO 168, BUKIT BATOK WEST AVE 8 / ST 11

TRANSFORMING NEIGHBOURHOODS TOGETHER

The Town Council supports national agencies such as the Housing and Development Board (HDB), the Land Transport Authority (LTA), and the National Parks Board (NParks) in fostering vibrant work, live, and play environments for all residents. Below are the works:



**NEW HIGH COVERED LINKWAY
ACROSS BUKIT VIEW SEC SCHOOL AT BUKIT BATOK ST 21**



**NEW HIGH COVERED LINKWAY
ACROSS ST LUKE'S HOSPITAL AT BUKIT BATOK ST 11**



**NEW LIFT AT OVERHEAD BRIDGE
BLK 229 BUKIT BATOK EAST AVE 3**



**BUKIT BATOK BUS INTERCHANGE ENHANCEMENT
(NEW HVLS FANS, LIFTS, SEATS, FLOORING FINISHES,
QUEUE RAILS, SIGNAGES AND PRIORITY QUEUE ZONES)**



**JURONG REGION LINE:
NEW BUKIT BATOK WEST STATION (JE3)**



**ISLANDWIDE CYCLING NETWORK (ICN) PROGRAMME -
ADDITIONAL 7.3KM IN BUKIT BATOK**

TRANSFORMING NEIGHBOURHOODS TOGETHER

FUTURE PLANS



NEW JURONG POLYCLINIC AND JURONG NURSING HOME



JURONG REGION LINE: NEW STATION (CORPORATION MRT STATION JS5)



BTO: JURONG WEST N3 C31-C32 (LAKESIDE VIEW)



NEW SCIENCE CENTRE (NEAR CHINESE GARDEN MRT)



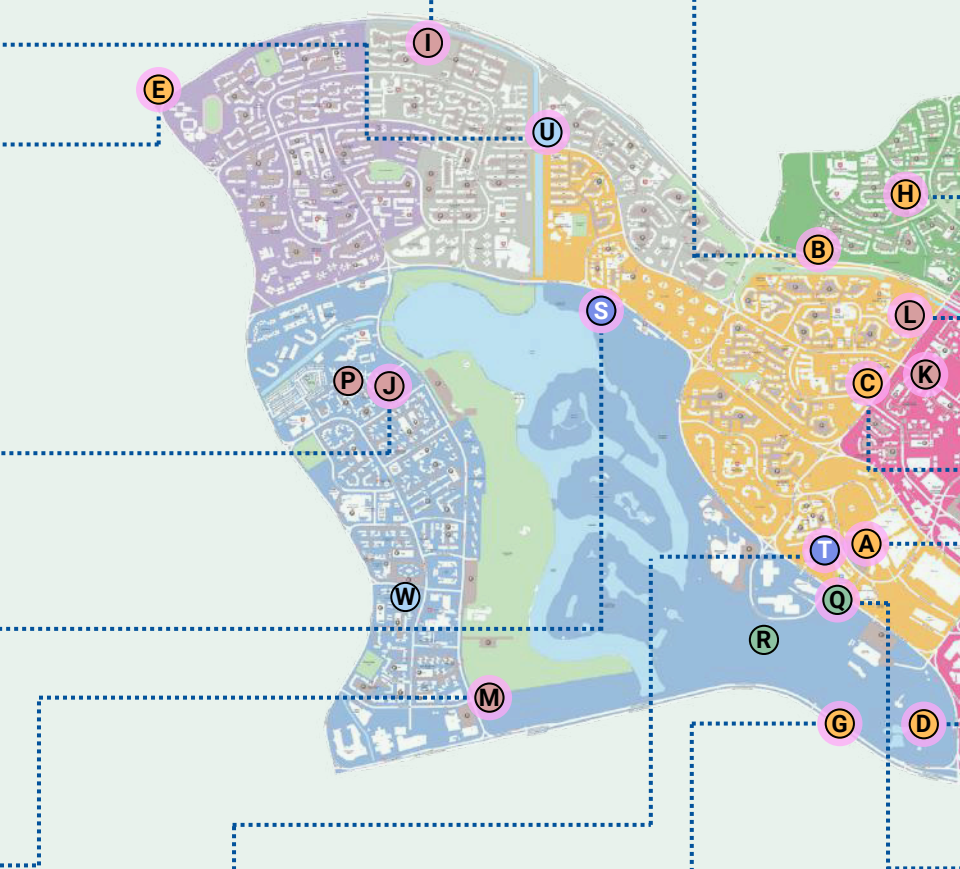
BTO: JURONG WEST N1 C34 (TAMAN JURONG SKYLINE)



BTO: JURONG WEST N4 C22 (JURONG ARCADIA)



JURONG REGION LINE: NEW STATION (BUKIT BATOK WEST MRT STATION JE3)



JURONG REGION INTEGRATED TRANSPORT HUB WITH JURONG REGIONAL LIBRARY



CROSS ISLAND LINE: NEW STATION (JURONG LAKE DISTRICT MRT STATION CR19)

LAND TRANSPORT AUTHORITY (LTA)

- A** JRL: New Station (Jurong East JE5)
- B** JRL: New Station (Bukit Batok West JE3)
- C** JRL: New Station (Toh Guan JE4)
- D** JRL: New Station (Jurong Town Hall JE6)
- E** JRL: New Station (Corporation JS5)
- F** CRL: New Station (Clementi CR17)
- G** CRL: New Station (Jurong Lake District CR19)
- H** Islandwide Cycling Network (ICN) Program (Expansion of Cycling Network)

HOUSING DEVELOPMENT BOARD (HDB)

- I** BTO: Jurong West N4 C22 (Jurong Arcadia)
- J** BTO: Jurong West N3 C31-C32 (Lakeside View)
- K** BTO: Jurong East N2 C26 (Toh Guan Grove)
- L** BTO: Jurong East N2 C24 (Jurong East Breeze)
- M** BTO: Jurong West N1 C34 (Taman Jurong Skyline)
- N** Home Improvement Programme (HIP): Blocks 623 - 628 Bukit Batok Central
- O** Home Improvement Programme (HIP): Blocks 297 - 299 Bukit Batok St 22
- P** Home Improvement Programme (HIP): Blocks 345 - 355 Kang Ching Rd / Corporation Drive



LTA'S ISLANDWIDE CYCLING NETWORK (ICN) PROGRAMME (BUKIT BATOK WEST, CLEMENTI, JURONG WEST, TAMAN JURONG)



BTO: JURONG EAST N2 C24 (JURONG EAST BREEZE)



BTO: JURONG EAST N2 C26 (TOH GUAN GROVE)



JURONG REGION LINE: NEW STATION (TOH GUAN MRT STATION JE4)



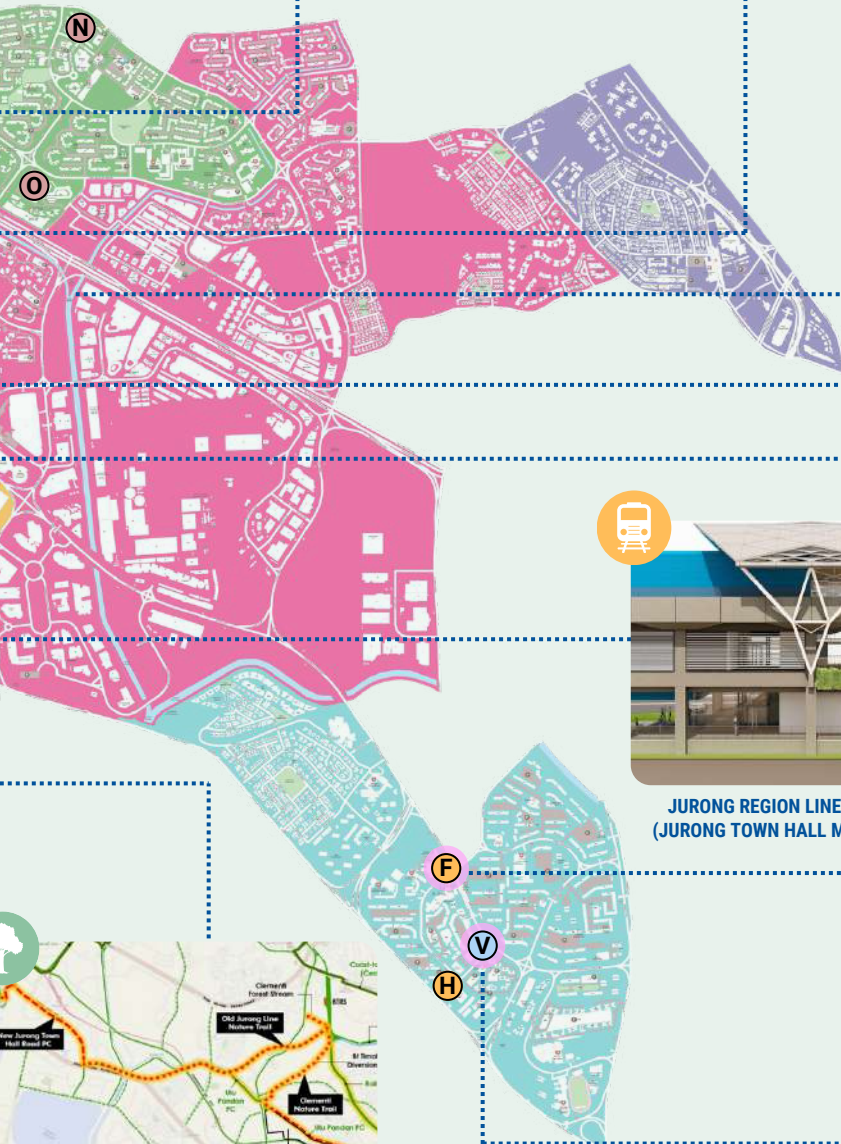
JURONG REGION LINE: NEW INTERCHANGE STATION (JURONG EAST MRT STATION JE5)



CROSS ISLAND LINE: NEW INTERCHANGE STATION (CLEMENTI MRT STATION CR17)



REDEVELOPED CLEMENTI POLYCLINIC



OLD JURONG LINE NATURE TRAIL RAIL CORRIDOR THROUGH JURONG LAKE DISTRICT



NATIONAL PARKS (NPARKS)

- Q** Old Jurong Line Nature Trail Rail Corridor through Jurong Lake District
- R** Development of New Parks in Lakeside East



URBAN REDEVELOPMENT AUTHORITY (URA)

- S** Jurong Lake District (New Science Centre)
- T** Jurong Region Integrated Transport Hub with Jurong Regional Library



MINISTRY OF HEALTH (MOH)

- U** Redeveloped Jurong Polyclinic and New Jurong Nursing Home
- V** Redeveloped Clementi Polyclinic
- W** New Taman Jurong Polyclinic



Scan this QR code to see the developments and plans in your estate.



www.jrtc.org.sg



Jurong-Clementi Town Council



@jurongclementitc

All Rights Reserved

No part of this publication may be reproduced, stored in a retrieval system or transmitted, in any form or by any means, electronic, mechanical, photocopying, recording or otherwise, without the prior permission of the copyright owner, Jurong-Clementi Town Council.

All information provided in this publication is accurate and correct at the time of printing. The publisher reserves the right to make changes or updates without prior notice. Images on the Future Plans page were obtained from HDB, NPARKS, URA, LTA, and MOH.

This publication is produced using eco-friendly ink and low carbon paper from sustainability harvested forests.