



5-YEAR MASTER PLAN • 2026 - 2030

YUHUA

OUR TOWN, OUR STORY:

Reflections on our journey and shaping future goals

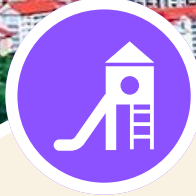
OUR AMENITIES AND SHARED SPACES

Check out the amenities Yuhua has to offer!



26

MULTI-PURPOSE SPACES & OTHERS



23

PLAYGROUNDS



20

FITNESS CORNERS



12

COMMUNITY GARDENS



28

DROP-OFF POINTS



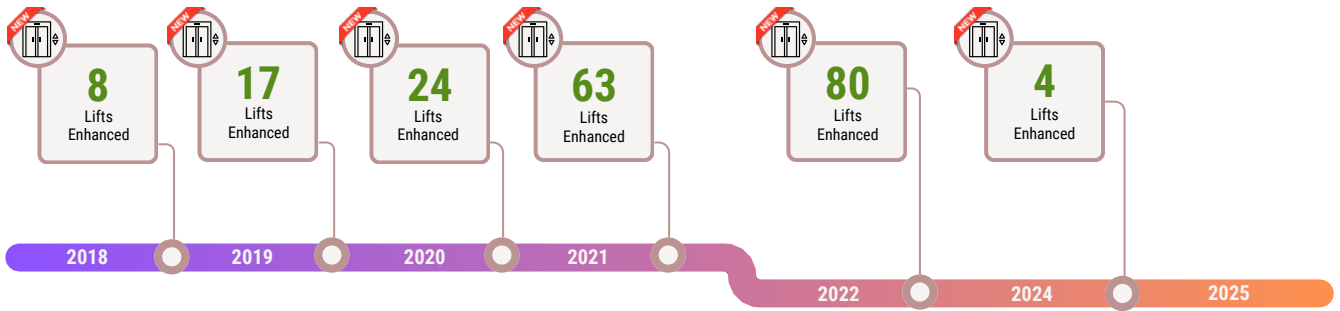
113

SHELTERED LINKWAYS / FOOTPATHS

LIFT PERFORMANCES & SUSTAINABILITY

OPTIMISING LIFT PERFORMANCES FOR SMOOTHER RIDES

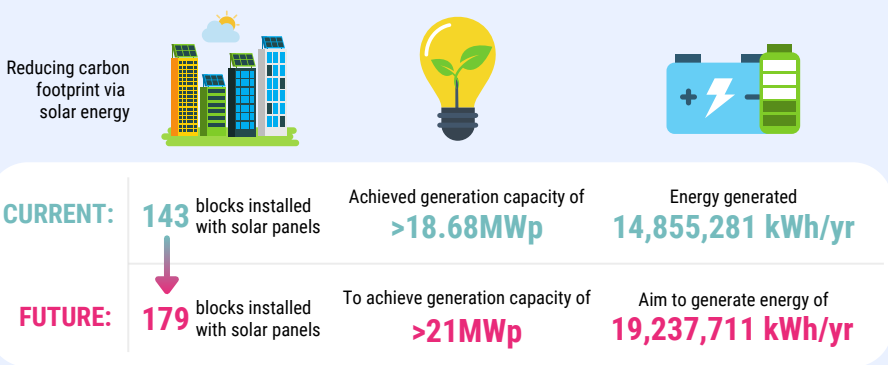
196 lifts in Yuhua have been enhanced under the Lift Enhancement Program (LEP) to ensure a safer and smoother lift ride experience for our residents.



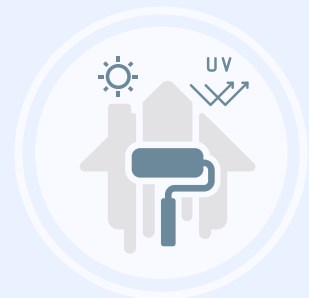
EMBRACING SUSTAINABILITY SOLUTIONS IN JRTC

Jurong-Clementi Town Council partnered with agencies, residents, volunteers and communities to roll out initiatives and create awareness on sustainability in our estate. These collaborations have helped create a sustainable environment benefitting the whole of our town.

INSTALLATION OF SOLAR PANELS



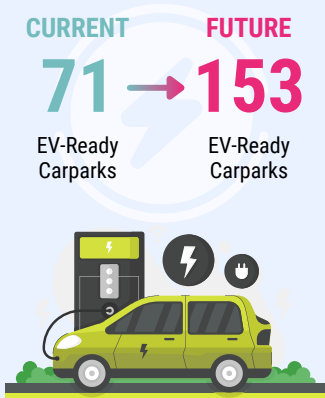
HEAT-REFLECTIVE PAINT INITIATIVE BY 2030



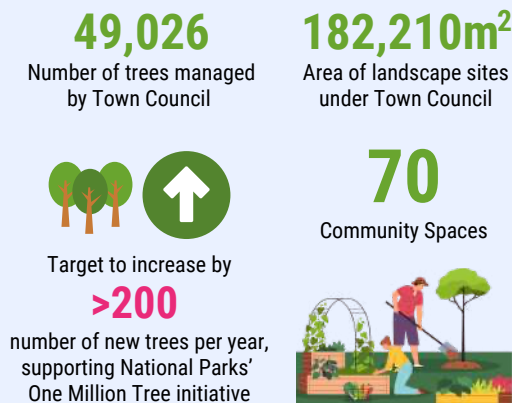
RECYCLING EFFORTS from 2024 - 2025



EV-READY CARPARKS



SUSTAINABLE CITIES & COMMUNITIES



COMPLETED WORKS (2021 - 2025)

In the past five years, Yuhua neighbourhoods have been rejuvenated with **more social and shared spaces, drop-off points, fitness corners, playgrounds, and community gardens**. Twenty-four blocks have been revitalised through the Repairs and Redecoration works.

CONNECTING OUR NEIGHBOURHOOD

Rain or Shine: Sheltered Paths and Smoother Journeys



NEW HIGH LINKWAY FROM BLOCK 317 TO
BLOCK 343 JURONG EAST ST 31



NEW HIGH LINKWAY AND SHELTERED BFA RAMP FROM
BLOCK 229 JURONG EAST ST 21 TO BLOCK 252 JURONG EAST ST 24



"It is very useful especially for residents on wheelchairs and their helpers, as they will be sheltered from the sun or rain when travelling to the pedestrian crossing."

SHADAH BIN ABDUL SAMAD

Resident of Yuhua

on the New Shelter over Existing BFA Ramp at Block 229 Jurong East St 21

HAVING MORE FUN IN OUR NEIGHBOURHOOD

Rejuvenated Social and Recreation Shared Spaces



UPGRADED FITNESS CORNER AND BBQ PITS AT
BLOCK 236 JURONG EAST ST 21



UPGRADED HARD COURT AT
BLOCK 260 JURONG EAST ST 24



UPGRADED COMMUNITY GARDEN AT
BLOCK 318A AND BLOCK 319
JURONG EAST ST 31



**UPGRADED FITNESS CORNER AT
BLOCK 101 JURONG EAST ST 13**



**UPGRADED ALLOTMENT GARDEN
FROM COMMUNITY GARDEN
AT BLOCK 108 JURONG EAST ST 13**



**UPGRADED CHILDREN PLAYGROUND AT
BLOCK 223A JURONG EAST ST 21**

"The upgraded fitness corner is a great place to stay active. I often see people exercising there, morning and night."

NANCY TAN

Resident of Yuhua
on the Upgraded Fitness Corner
at Block 101 Jurong East St 13



"I truly appreciate the work done on this playground. It's wonderful to see at least 10 kids, including mine, gather here almost every evening to play together. The parents often socialize as well. A job well done!"

VINOD AND FAMILY

Resident of Yuhua
on the Upgraded Children
Playground at Block 223A
Jurong East St 21



LIST OF COMPLETED WORKS AND WORK-IN-PROGRESS (2021 - 2025)



COMMUNITY GARDEN

- Community Garden at Block 318A and 319
- Upgraded Allotment Garden from Community Garden at Block 108
- Allotment Garden between Block 233 and 238



REPAIRS & REDECORATION

- Blocks 108 to 116, 232 to 240
- Blocks 215 to 231
- Blocks 241 to 245
- Blocks 347 (Market and Hawker Centre)
- Blocks 317 to 327, 342 to 354
- Blocks 255 to 264
- Blocks 254 (Market and Hawker Centre)



PLAYGROUND

- Playground at Block 223A
- Playground at Block 240C



DROP-OFF POINT

- Drop-off Point and Low Covered Linkway at Block 317
- Drop-off Point and Low Covered Linkway at Block 320
- Drop-off Point and Low Covered Linkway at Block 328
- Drop-off Point and Covered Linkway at Block 210



FITNESS CORNER

- Fitness Corner at Block 101
- Fitness Corner and BBQ Pits at Block 236



MULTI-PURPOSE SPACE / COURT

- Hard Court at Block 260

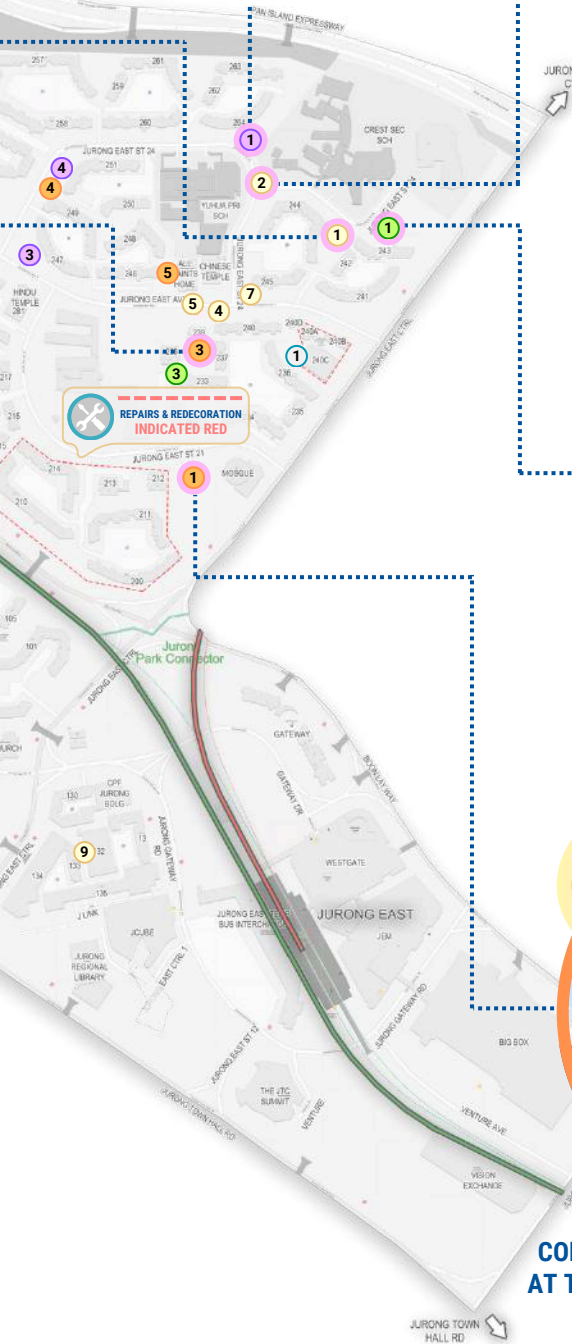


COVERED LINKWAY / FOOTPATH

- High and Low Linkway from Block 317 to 343
- Shelter over Existing BFA Ramp at Block 229
- Covered Linkway with BFA Ramp at Block 244
- Covered Linkway at Block 240
- BFA Ramp with Sheltered Linkway at Block 213
- High Linkway at Block 229 to 252
- Sheltered BFA Ramp at Block 261
- Covered Linkway from Block 244 to 243



UPGRADING OF PLAYGROUND AT BLOCK 264



LIST OF FUTURE WORKS IN 2026 - 2030



CONSTRUCTION OF HIGH AND LOW LINKWAY BETWEEN BLOCK 244 TO 264



CONSTRUCTION OF ALLOTMENT GARDEN AT BLOCK 243



CONSTRUCTION OF SPORT-IN-PRECINCT AT THE EXISTING FIELD BESIDE BLOCK 212

↑ NEIGHBOURHOOD RENEWAL PROGRAMME

- 1 Neighbourhood Renewal Programme for Zone 5 at Blocks 322, 323, 322A, 325, 327, 343 to 346, 348 to 354

🔧 REPAIRS & REDECORATION

- 1 Blocks 209 to 214 and 240A to 240C

📍 DROP-OFF POINT

- 1 Upgrading of Drop-off Point at Block 102

🏠 PLAYGROUND

- 1 Upgrading of Playground at Block 264
- 2 Upgrading of Playground at Block 221A
- 3 Upgrading of Playground at Block 247
- 4 Upgrading of Playground at Block 251
- 5 Upgrading of Playground at Block 324

🌱 ALLOTMENT GARDEN

- 1 Construction of Allotment Garden at Block 243
- 2 Construction of Allotment Garden at Block 221A
- 3 Construction of Allotment Garden at Block 232 and 233

🚶 COVERED LINKWAY / FOOTPATH

- 1 Construction of Low Linkway with Ramp between Block 243 and 244
- 2 Construction of High and Low Linkway between Block 244 to 264
- 3 Upgrading of Covered Linkway at Block 321 to 322 and 326 to 327
- 4 Construction of Linkway from Block 240 to Bus Stop in front of Block 239
- 5 Construction of High and Low Linkway from Bus Stop to Block 239 and 246
- 6 Construction of Sheltered BFA Ramp at Block 231
- 7 Construction of Covered Linkway from Block 245 to 246 (Bus Stop)
- 8 Construction of BFA Ramp at Block 220
- 9 Upgrading of Boardwalk and Seating Area between Block 132 and 133
- 10 Construction of Covered Linkway from Existing Linkway at Jurong Polyclinic near Block 320 and 328

🏃 SPORT-IN-PRECINCT / FITNESS CORNER

- 1 Construction of Sport-In-Precinct at the existing field beside Block 212
- 2 Upgrading of Fitness Corner behind Block 107 Street Soccer Court
- 3 Construction of Elderly Fitness Corner at Block 237
- 4 Upgrading of Fitness Corner at Block 251
- 5 Construction of Elderly Fitness Corner between Block 246 Jurong East St 24 and All Saints Home

HIGHLIGHTS OF FUTURE WORKS

(2026 - 2030)



CONSTRUCTION OF SPORT-IN-PRECINCT AT THE EXISTING FIELD BESIDE BLOCK 212 JURONG EAST ST 21



CONSTRUCTION OF LOW LINKWAY WITH RAMP BETWEEN BLOCK 243 AND 244 JURONG EAST ST 24



CONSTRUCTION OF HIGH AND LOW LINKWAY BETWEEN BLOCK 244 AND 264 JURONG EAST ST 24

TRANSFORMING NEIGHBOURHOODS TOGETHER

The Town Council supports national agencies such as the Housing and Development Board (HDB), the Land Transport Authority (LTA), and the National Parks Board (NParks) in fostering vibrant work, live, and play environments for all residents. Below are the works:



JURONG GATEWAY HUB - NEW YUHUA COMMUNITY CLUB (IN RED OUTLINE)



JAPANESE GARDEN AT JURONG LAKE GARDENS



CHINESE GARDEN AT JURONG LAKE GARDENS

TRANSFORMING NEIGHBOURHOODS TOGETHER

FUTURE PLANS



NEW JURONG POLYCLINIC AND JURONG NURSING HOME



JURONG REGION LINE: NEW STATION (CORPORATION MRT STATION JS5)



BTO: JURONG WEST N3 C31-C32 (LAKESIDE VIEW)



NEW SCIENCE CENTRE (NEAR CHINESE GARDEN MRT)



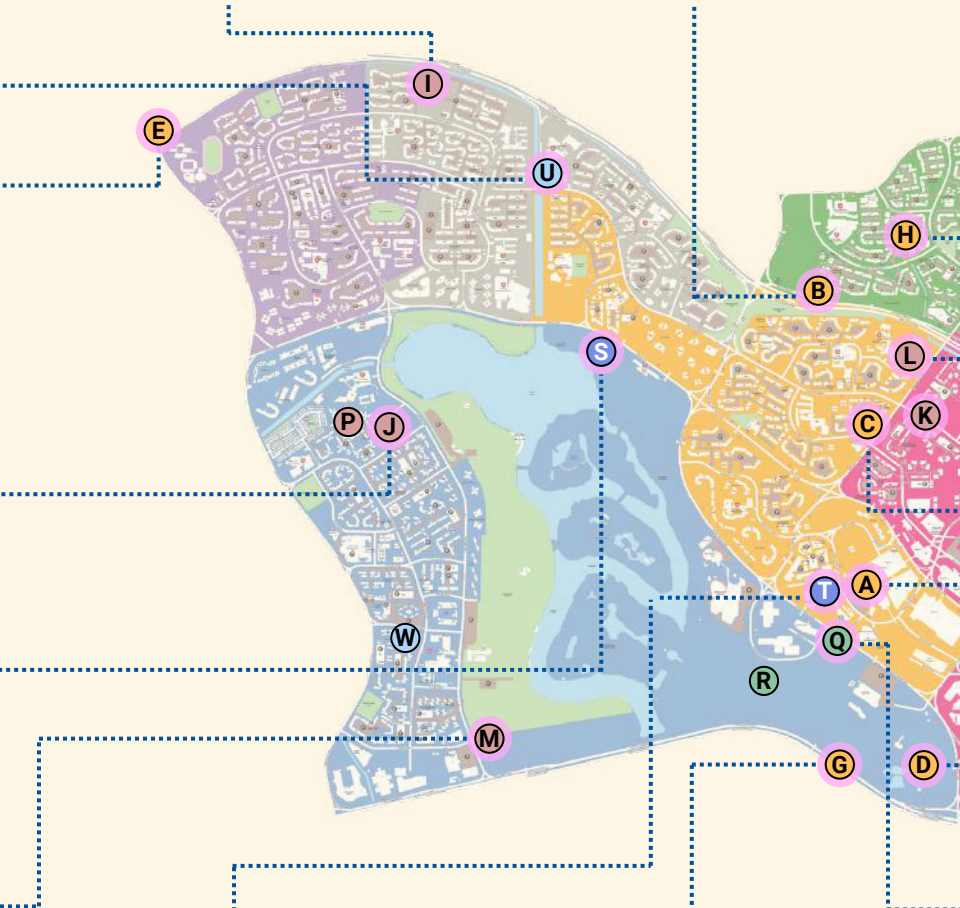
BTO: JURONG WEST N1 C34 (TAMAN JURONG SKYLINE)



BTO: JURONG WEST N4 C22 (JURONG ARCADIA)



JURONG REGION LINE: NEW STATION (BUKIT BATOK WEST MRT STATION JE3)



JURONG REGION INTEGRATED TRANSPORT HUB WITH JURONG REGIONAL LIBRARY



CROSS ISLAND LINE: NEW STATION (JURONG LAKE DISTRICT MRT STATION CR19)

LAND TRANSPORT AUTHORITY (LTA)

- A** JRL: New Station (Jurong East JE5)
- B** JRL: New Station (Bukit Batok West JE3)
- C** JRL: New Station (Toh Guan JE4)
- D** JRL: New Station (Jurong Town Hall JE6)
- E** JRL: New Station (Corporation JS5)
- F** CRL: New Station (Clementi CR17)
- G** CRL: New Station (Jurong Lake District CR19)
- H** Islandwide Cycling Network (ICN) Program (Expansion of Cycling Network)

HOUSING DEVELOPMENT BOARD (HDB)

- I** BTO: Jurong West N4 C22 (Jurong Arcadia)
- J** BTO: Jurong West N3 C31-C32 (Lakeside View)
- K** BTO: Jurong East N2 C26 (Toh Guan Grove)
- L** BTO: Jurong East N2 C24 (Jurong East Breeze)
- M** BTO: Jurong West N1 C34 (Taman Jurong Skyline)
- N** Home Improvement Programme (HIP): Blocks 623 - 628 Bukit Batok Central
- O** Home Improvement Programme (HIP): Blocks 297 - 299 Bukit Batok St 22
- P** Home Improvement Programme (HIP): Blocks 345 - 355 Kang Ching Rd / Corporation Drive



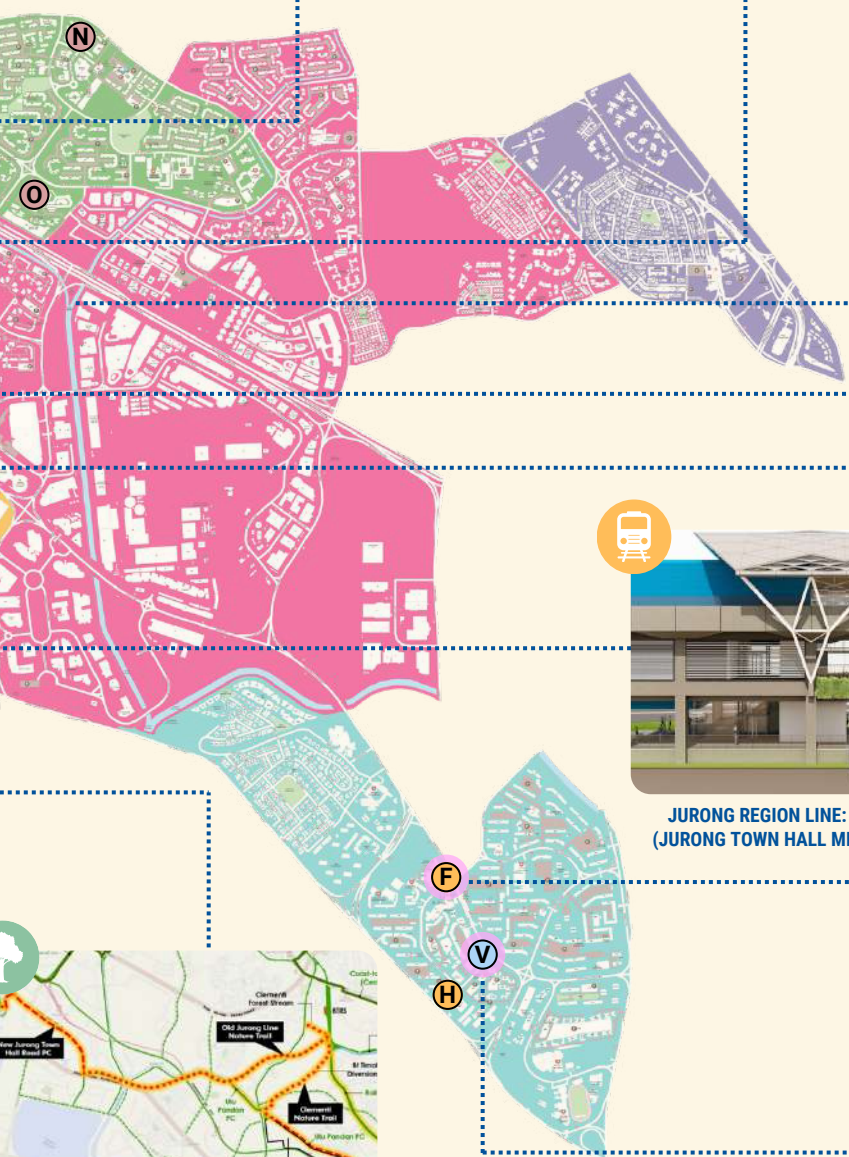
LTA'S ISLANDWIDE CYCLING NETWORK (ICN) PROGRAMME (BUKIT BATOK WEST, CLEMENTI, JURONG WEST, TAMAN JURONG)



BTO: JURONG EAST N2 C24 (JURONG EAST BREEZE)



BTO: JURONG EAST N2 C26 (TOH GUAN GROVE)



JURONG REGION LINE: NEW STATION (TOH GUAN MRT STATION JE4)



JURONG REGION LINE: NEW INTERCHANGE STATION (JURONG EAST MRT STATION JE5)



CROSS ISLAND LINE: NEW INTERCHANGE STATION (CLEMENTI MRT STATION CR17)



JURONG REGION LINE: NEW STATION (JURONG TOWN HALL MRT STATION JE6)



REDEVELOPED CLEMENTI POLYCLINIC



OLD JURONG LINE NATURE TRAIL RAIL CORRIDOR THROUGH JURONG LAKE DISTRICT

- NATIONAL PARKS (NPARKS)**
- Q** Old Jurong Line Nature Trail Rail Corridor through Jurong Lake District
 - R** Development of New Parks in Lakeside East

- URBAN REDEVELOPMENT AUTHORITY (URA)**
- S** Jurong Lake District (New Science Centre)
 - T** Jurong Region Integrated Transport Hub with Jurong Regional Library

- MINISTRY OF HEALTH (MOH)**
- U** Redeveloped Jurong Polyclinic and New Jurong Nursing Home
 - V** Redeveloped Clementi Polyclinic

- W** New Taman Jurong Polyclinic



Scan this QR code to see the developments and plans in your estate.



www.jrtc.org.sg



Jurong-Clementi Town Council



@jurongclementitc

All Rights Reserved

No part of this publication may be reproduced, stored in a retrieval system or transmitted, in any form or by any means, electronic, mechanical, photocopying, recording or otherwise, without the prior permission of the copyright owner, Jurong-Clementi Town Council.

All information provided in this publication is accurate and correct at the time of printing. The publisher reserves the right to make changes or updates without prior notice. Images on the Future Plans page were obtained from HDB, NPARKS, URA, LTA, and MOH.

This publication is produced using eco-friendly ink and low carbon paper from sustainability harvested forests.